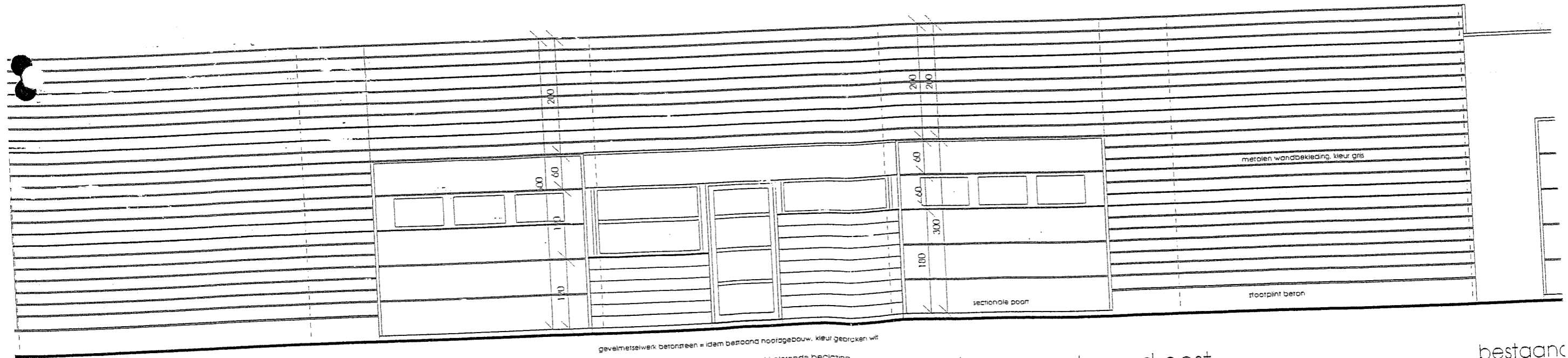


langsgevel zuid-west

and uitbreiding

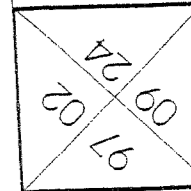
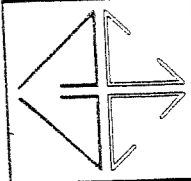


langsgevel noord-oost

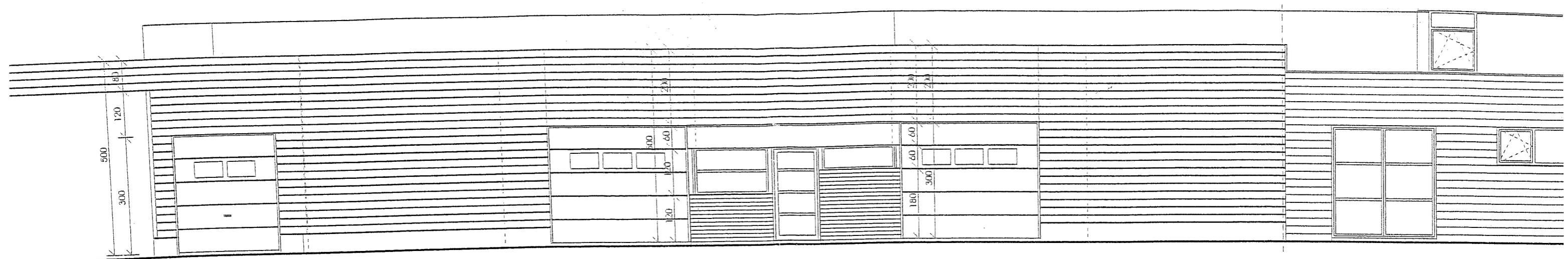
uitbreiding

gevelmetselwerk betonsteen = idem bestaand noordgebouw, kleur gebroken wit
 buitenschijfwerk alu. kleur donkergrijs met isolerende beglazing

bestaand

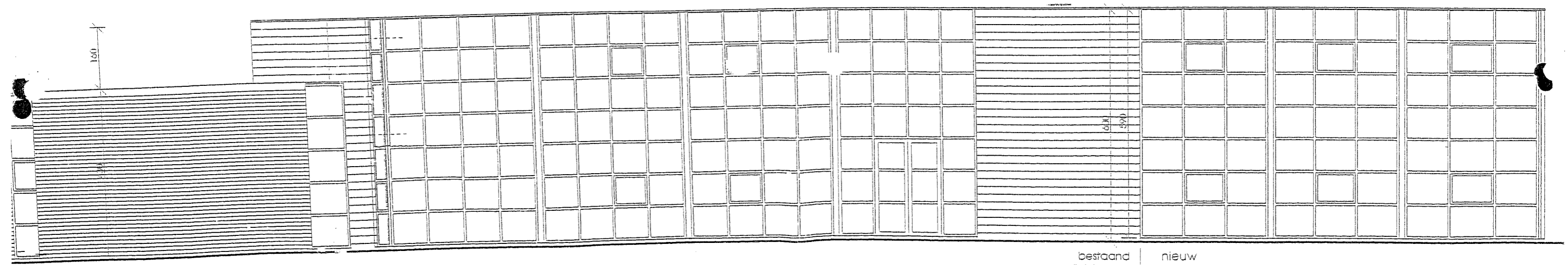


8



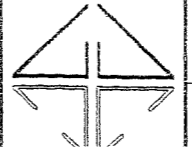
nieuw | bestaand

gevel 1 - oost

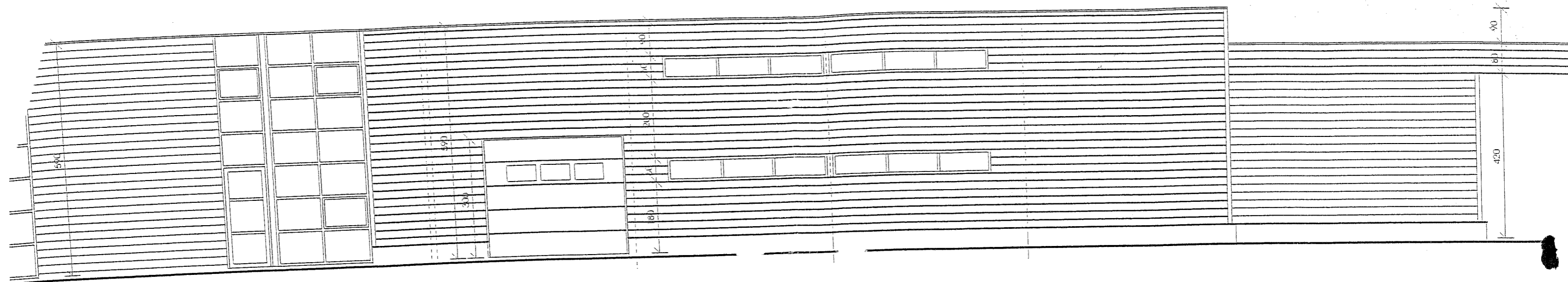


bestaand | nieuw

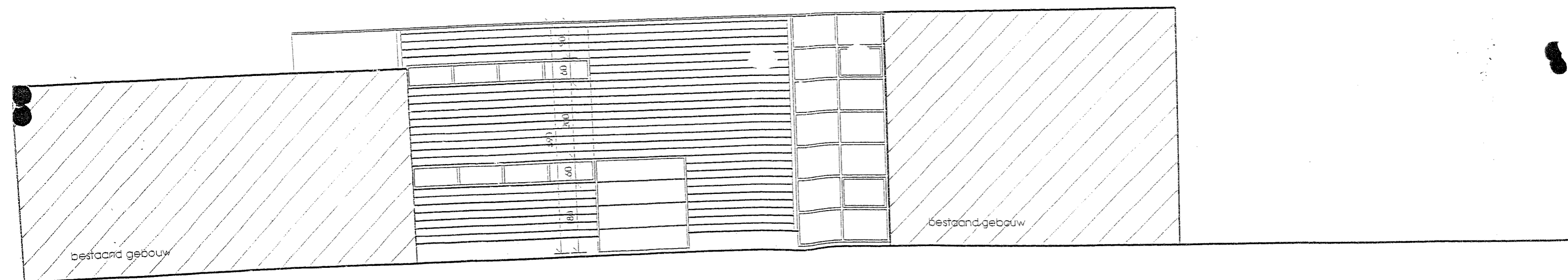
gevel 2 - west

uitbreiding bedrijfsgebouw		04 06 24 12		gevels 1	1 / 100
benes bvba	13103 904			dossier	blad

17



gevel 3 - zuid

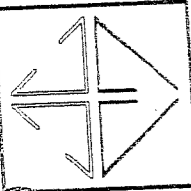


gevel 4 - noord - binnengevel

Planning bedrijfsgebouw

dossier

04 06
24 12



blad

geplkvloers

1



